

After the Great War...



William Garnett Esq. J.P.
1851-1929
Chairman, Secretary
and Treasurer of
the Parkinson Trust to 1916
and Chairman until 1924.

William Garnett was the son of William James Garnett of Quernmore Park, Lancaster.

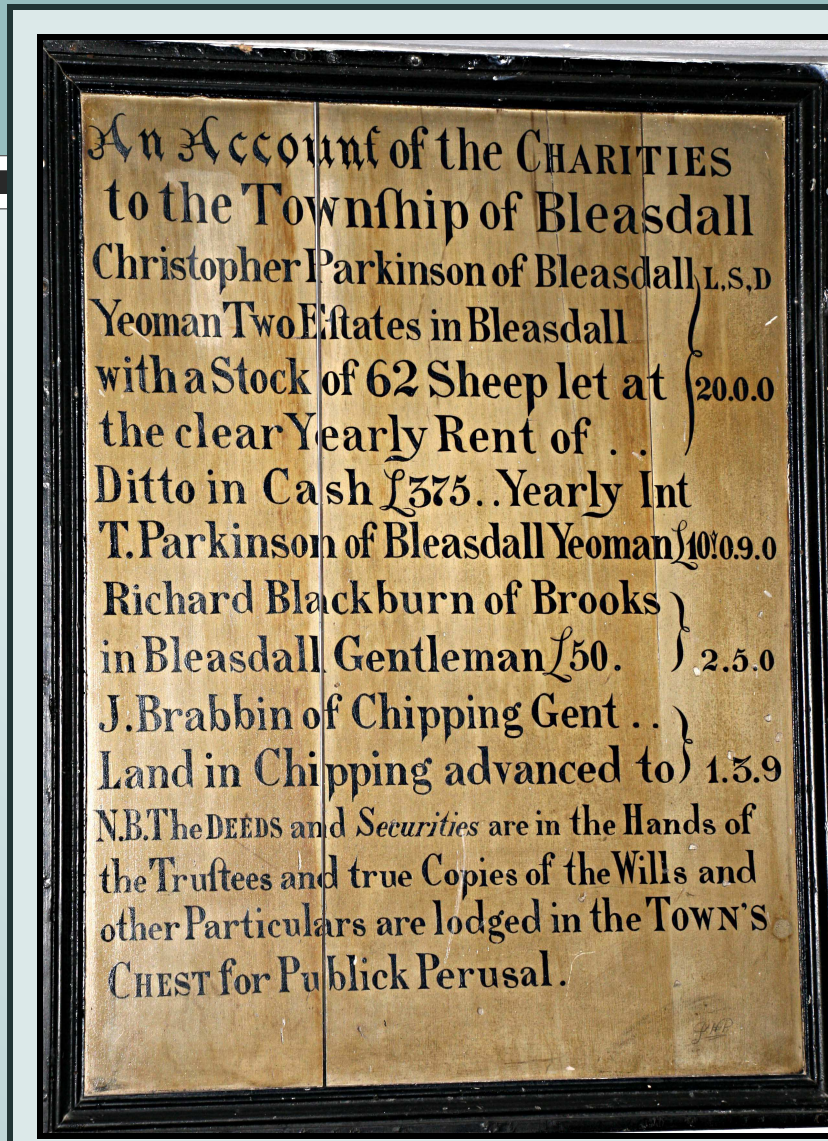


A photo from 1911 shows Alderman William Garnett (seated centre), the first District Commissioner of the Scout Association for South Lonsdale, with Scout Masters at Halton Vicarage.



Owner of Bleasdale Tower and

Estate, he took on responsibilities in the Parish, including being Chairman of Bleasdale School managers. He owned Bleasdale Reformatory until its closure in 1905.



The Charities Board inside St. Eadmer's Church, Bleasdale

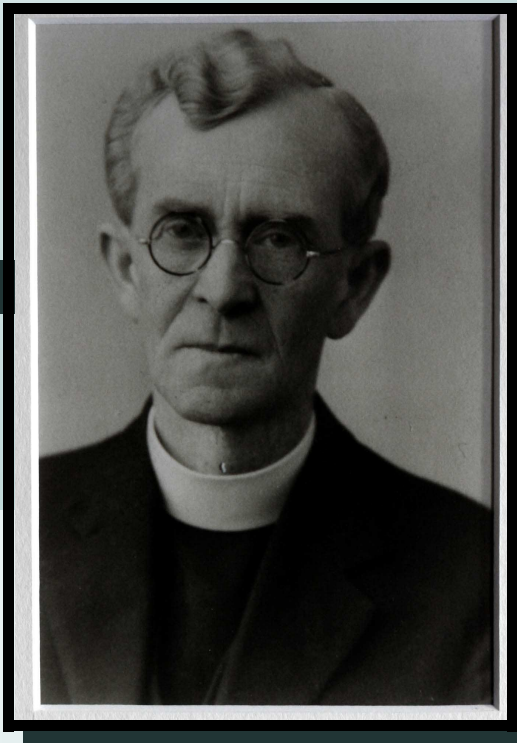
Parkinson's Charity was founded in 1702

THE PARKINSON TRUST

by the Will of Christopher Parkinson to provide money for the minister, schoolmaster and the poor of the Parish of Bleasdale. By the beginning of the twentieth century the Trust owned Admarsh and Holme House Farms, and sporting rights, until around 1921, when they were sold. The Trustees met twice a year to discuss the upkeep of the farms (until their sale) and of the school, and to distribute the income. In the early twentieth century they supported organisations such as the Bleasdale Library, the Recreation room and Evening Classes, and the Calder Vale Nursing Association.

Detail from photo on right

Rev. William Chick Haines,
1882 - 1967
Priest-in-Charge of Bleasdale
1918-1942, combined with St. John's, Calder Vale from 1930



A Trustee of the Parkinson Charity from 1918, Rev. Haines was educated at Hatfield College, Durham and Lincoln Theological College. He was curate at Cross Stone, Todmorden and Castle Douglas, Dumfriesshire. Chairman of Bleasdale Recreation Room, he was instrumental in the building of Bleasdale Memorial Parish Hall in 1929. He was a Garstang Rural District Councillor and retired to Grange-over-Sands.



St. Eadmer's Church, Bleasdale.

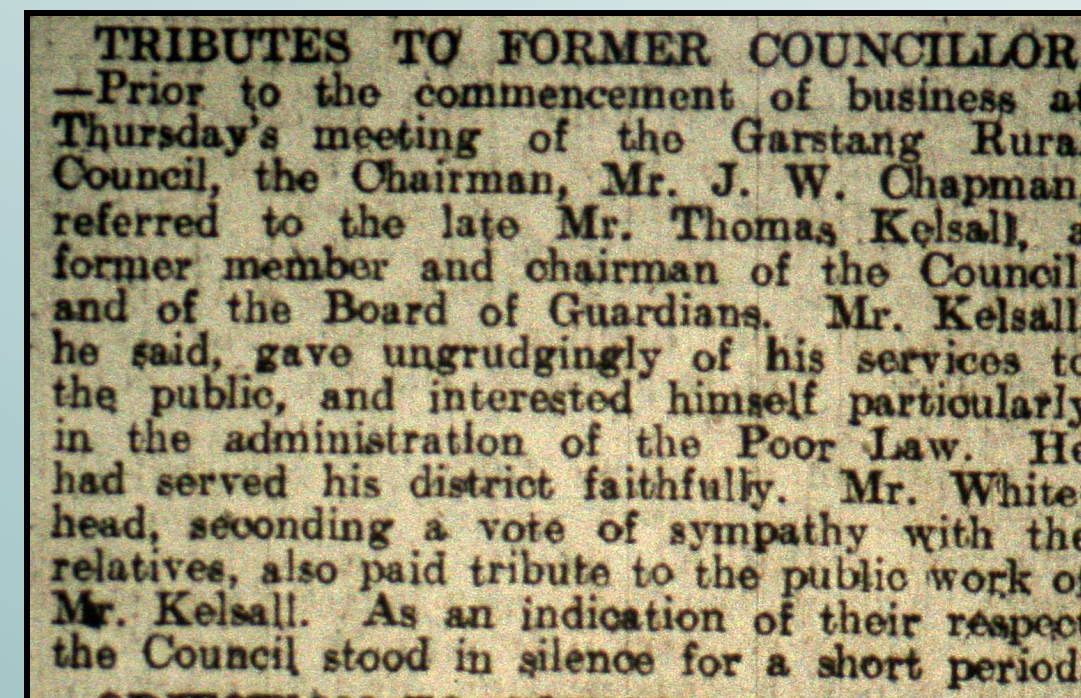
Early twentieth century



Thomas Butler Silcock,
1874-1960
Trustee from 1925

Thomas Silcock bought Bleasdale Tower and the Bleasdale Estate from William Garnett in the early 1920s, with his brother

W. A. Silcock. They were farmers and Agricultural Feed merchants.



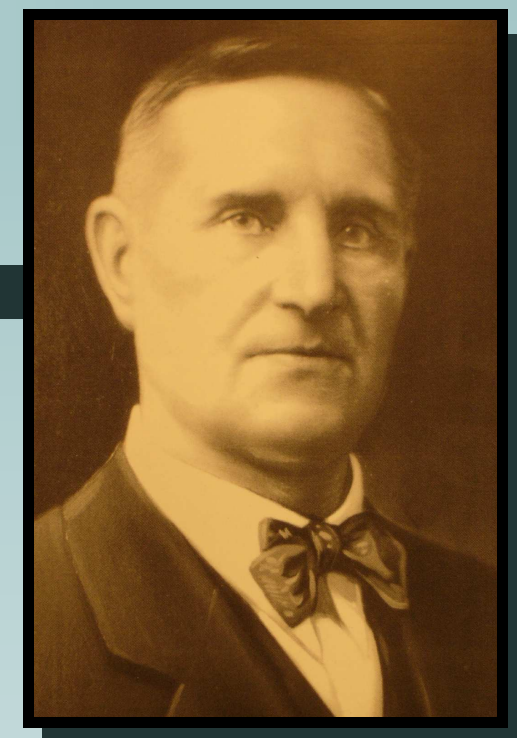
Thomas Kelsall and his family lived at Fairsnape Farm. Besides his farming activities he was a Bleasdale School Manager, the Clerk to Bleasdale Parish Council and a Garstang Rural District Councillor. He was also on the committee of Garstang Agricultural Society.

Thomas Kelsall
1865-1933
Bleasdale Farmer
and Trustee from
1901 to his death



Thomas Kelsall snr. and Mrs. Elizabeth Ann Kelsall of Fairsnape, Bleasdale, their children, son-in-law and grandson.

Harold Jackson
c.1869-1947
Trustee from before 1901,
Secretary from 1919
and Chairman from 1925.



Paper Manufacturer and farmer of Oakenclough, Harold Jackson was a founder member of the Lancashire Milk Recording Society, becoming President then Chairman of the Central Council from 1921-1923. He was a Vice-president of the Royal Lancashire, and President of the Garstang, Agricultural Societies. In Bleasdale, he was Chairman of the Parish Hall Committee.



Fairsnape Farm 2016

This picture taken in 1898 shows Thomas Kelsall, centre, digging out the remains of the Bronze Age Bleasdale Timber Circle, which he discovered.



Photograph courtesy of the Harris Museum and Art Gallery

