

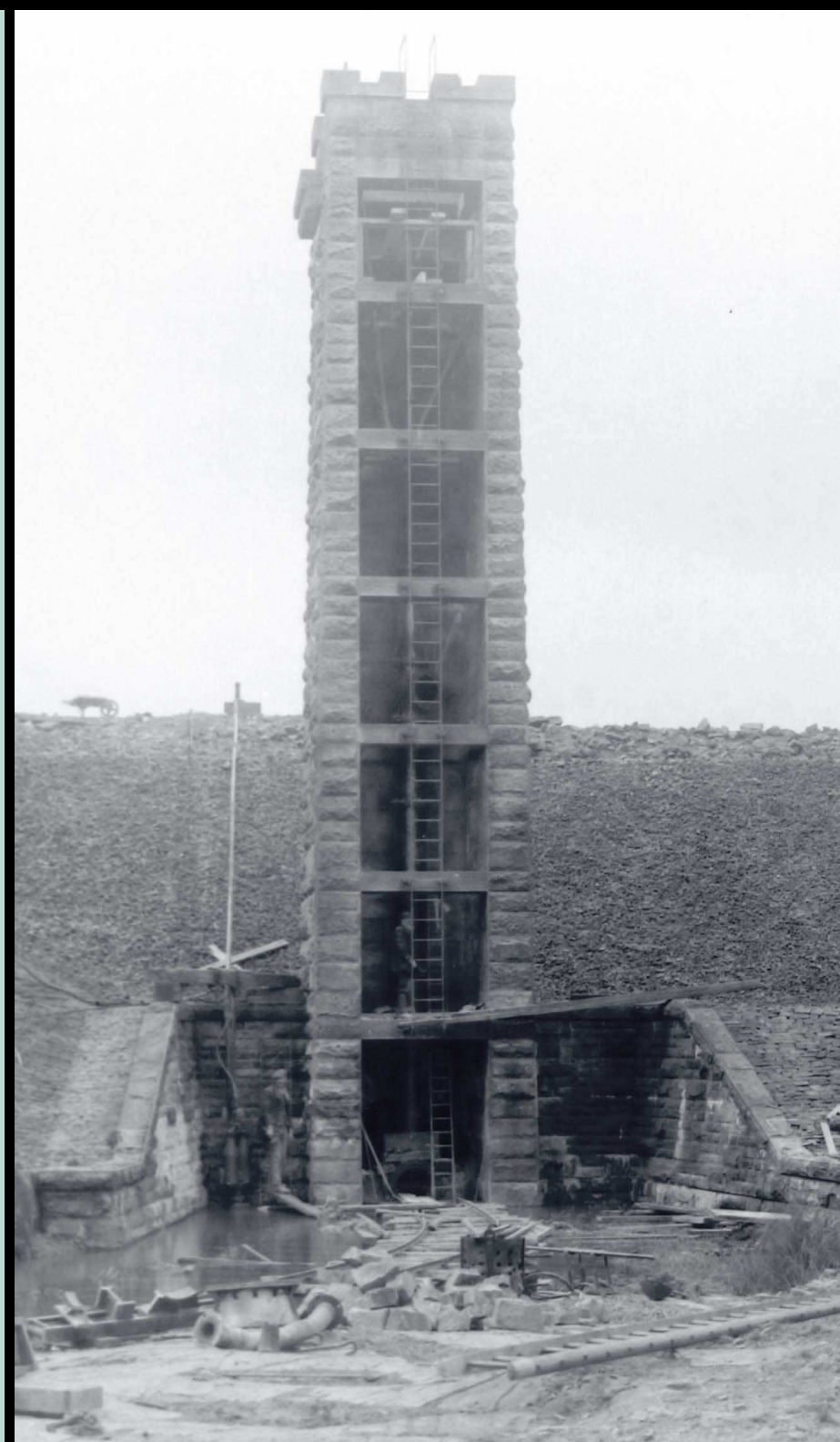
The Reservoirs today...



Grizedale Lea Reservoir is unusual in the fact that it has embankments more than three-quarters of the way around. The inside face is lined with stone blocks - each one cut by hand.



Even though the Drawoff Tower was built first the pipework was not put in until 1922. The tunnel was used as a drain for the basin throughout construction.



Recent (2014) cutting of woodland has exposed the foundations of the accommodation huts - still in situ.



Supported by
The National Lottery[®]
through the Heritage Lottery Fund

